



Two Great Reasons to Visit Us this Fall!

Antique Doll Collection

During the months of October and November, Art on Main will display a representative portion of a "travel doll" collection belonging to one of our member artists, Sheila Wertman.

Her treasure trove of more than 200 dolls was inherited from her grandmother and dates back to the 1920s. From all over the world, these handmade cloth dolls, of no more than 10 inches in height, were collected through the 1950s by her grandmother,



who initially received them as gifts from family members who travelled extensively. This introduced her to doll companies from the United States and soon dolls representing the various states were added to the growing assembly.



Unless you are already inclined towards collections like this, you really have to see it to appreciate

it. The range of dolls is vast - from a Navaho Indian family wearing beaded necklaces of turquoise, wide belts decorated with metal and beads, headbands and moccasins to a native Albanian family wearing handmade hats, fabrics and shawls, complete with a dagger inserted into the man's belt.

Pick a Pear

The much-admired pear has a long history in popular culture and in art. Not only have they long been considered food for the soul, they're beautiful and ornamental by nature with a palette that extends well beyond middle green and yellow.



This fall, we decided to have a little fun and present to you a variety of framed pears by different artists for you to look at and enjoy or, even better, to choose from to purchase as a special gift for someone or to hang in a special place in your own home. ❖



"Make the gallery part of your visit to Murphys this Fall. You won't be disappointed!"

Highlights from five Art on Main artists...

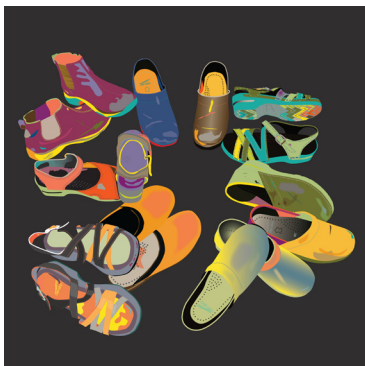
Pat Jennings

Art on Main digital artist, Pat Jennings, draws and photographs her way to bright, creative and often humorous images using her computer. Her medium is the software program called Adobe Illustrator, which includes her favorite tool called the Color Picker. Pat loves color, shape, nature and detail, and bases many of her illustrations on the photographs she takes. Her work is very two-dimensional, readily admitting that she does not see well in three dimensions.

Using her Color Picker tool, Pat selects any color she likes and uses it to fill any shape. Quite often she allows her computer to assign colors to her images, but she has created many of her own palettes too, using descriptive names like Summer Aspen, Gauguin, Impressionist and Desert Colors and says she is partial to yellow and black.



Most artists have a favorite piece of art that they own. Pat's hangs over her computer and is a collage/drawing by well-known San Francisco Bay Area multi-media artist, Raymond Saunders. It's the first piece of art she purchased with her own money and features ducks and some "Raymond-like" scribbles. This piece does not have the color and texture of many of Saunders' work, but she says it was in her price range, and she loves it.



And finally, for a digital artist who loves Dansko shoes, it may come as a surprise to find out that Pat has worn out many pairs of New Balance 990s! In her 30s and 40s, she ran several marathons in the Bay Area - with a best time of 3:19:52. For those who might be interested, that's just a little over 7 minutes per mile. Very cool. Like her art.

You may visit Pat's website at: www.graygoosestudio.wordpress.com. ❖

Ron and Carole Kamerlink

Silver, gold, copper, gemstones, natural stones, handmade glass beads...for almost 30 years this has been Ron and Carole Kamerlinks' passion! They constantly look at these materials and see endless possibilities for creating their popular, wearable treasures. They strive to make each piece unique.



Ron and Carole raised five children, cared for aging parents and owned a successful mortgage company. Then, on a trip to The Big Island they purchased a beautiful raku bead necklace and earring set for their daughters. When one moved away, Ron started doing research on where to find raku beads so he could make one for her to take. He was soon buying beautiful handmade beads and before long Ron and Carole were taking classes to learn stringing, wire wrapping and metal work.

Ron enjoys working with fine silver, but also has a passion for flame painting copper. Solid copper is heated and cooled with a fine tip torch until the colors of the spectrum are brought out. He has found his niche in this art form since he has the ability to get all the colors on one piece. He now



creates copper dishes, wall switch plates, bookmarks and insets for wooden boxes.



Carole can't wait to get into her studio, turn on some Hawaiian music and get her hands on some beads and wire. She loves gemstones, combining color combinations and also likes to weave a variety of materials such as leather, cords, and threads into her wirework. She also uses her new hammers for form folding and texturizing metals.

The Kamerilinks' work is featured and sold in several galleries and wine tasting rooms in Northern California under the name of Wild Hare Design. ❖

Sarah Switek

As an art educator, Sarah has done many forms of art, from printmaking to watercolor, oil painting and weaving. However, for the last 25 years she has focused mainly on working with clay. Over the years she has used her degree from Purdue University in Indiana to teach at the junior high and high school level, but interestingly, she also spent six summers teaching art projects to street kids in a camp by the sea in Albania.



Over the last 15 years, Sarah has taken numerous classes with well-known potters and sculptors. Her main focus: alternative types of firings. At her Mokelumne Hill studio, she has electric, gas, salt and Raku kilns. Though she does decorative and functional wheel work, her preference is for sculptural forms. Most of her work has a strong textural element and she loves to combine the natural surface textures found in nature with the creation of human and decorative forms. One of her favorite pieces is a clay vessel that sits center stage in her family room. It is actually a collaboration with her engineer husband and combines her loose style, where she leaves rougher edges, with his careful lines and exacting measurements. It's a piece they are proud of.

This artist has traveled broadly. Her favorite tool is a handmade wood mallet she found while visiting Uganda that she uses for whacking clay into shape. At one time Sarah was involved with a humanitarian organization and during the Kosovo war traveled to Belgrade, Serbia, to bring aid to the main children's hospital there. She brought a smile to the faces of the sick and injured children by dressing as a clown, making them balloon animals, and distributing toys and treats. Sarah brings a large variety of experience to her work with ceramics which you can view at the gallery or at one of her studio shows. ❖



Sheila Wertman

Although local artist Sheila Wertman has a background in watercolor painting and has also taken up photography, she currently specializes in beautiful and intricate paper cuttings. Influenced by her career in floral design and inspired by Matisse, Sheila creates eye-catching and unique designs with her paper cutouts. These are often enhanced by combining them with the watercolors she enjoys using and painting with for her other artwork.



Art has always been part of Sheila's life. Growing up and living in a log cabin in the Santa Cruz Mountains with two artist parents, she was not only influenced by them, but was also surrounded by the natural world where she raised animals, gardened, and had a profound love of horses. She studied watercolor in high school and continued her art classes in college, continuing her education with many talented artists along the way.

The artist maintains that paper cutting is a very simple, straight-forward art where she uses her own designs, paper and a knife. With that knife, an X-acto knife with very sharp blades, she is able to pull out extraordinarily detailed patterns from paper alone. Some of them are very effectively done in strictly black and white, while others are enlivened using her watercolors.

Now living in Murphys, Sheila has plenty of opportunity to explore and paint in the beautiful Sierra Foothills (where she likes to take her guests too). Next to her work table at home hangs her favorite piece of art, by artist Marie Gabrielle of Santa Cruz. It inspires her while she is working and listening to music streamed through the computer, mostly Classic Rock and Folk and Blues and other music that fits the genre. The artist was asked of something noteworthy that people might enjoy reading about her and she tells us that she inherited a travel-doll collection from her grandmother of over 200 handmade dolls, dating from 1920 through 1950 and no larger than ten inches high. It is something that adds to her sense of personal history and the art that she makes today. ❖



Copyright © 2016 Sheila L. Wertman

Calaveras Grape Stomp and Gold Rush Street Faire

On Saturday, October 7th, between 11:00 and 5:00, the gallery will participate with a variety of art offerings for this year's celebration of the grape harvest. ❖



Guest Artists

Come by and see the works of David and Heather Hopman of Chaos Glassworks. Specializing in blown glass, their art pieces are bright, colorful and creative. Items include lights, bowls, paper weights, and other unique pieces. ❖

Upcoming:

Day of the Dead

The annual Day of the Dead celebration will be held in Murphys on Saturday, November 4th, starting at 11:00. This is a fun event and the gallery will display an altar dedicated to the deceased parents of our artists. Day of the Dead jewelry, other art and complimentary treats will be available. ❖

Holiday Open House

We will be celebrating the holidays with the Murphys community on December 1st from 5:00 to 8:00 pm. Streets are closed and shops stay open. Please come in and see our beautiful holiday offerings, have some cookies and share in the spirit of the season! ❖

Change of Art

Our next art rotation is October 4, 2017, so please stop in and see our new work. And when you do come in to visit the gallery, be sure to fill out a card at the front desk and get the opportunity to win a \$50 gift certificate. We pick a card from the bowl every time we change our art work. It could be yours! The raffle winner for last quarter was Celine Decker, a local resident who recently moved to Murphys and says she loves our gallery! ❖

Gallery Artists Include:

Jan Alcalde, Marianna Bologna, Marlene Bradford, Kathleen Canning, Sarah Evans, Annie Fountain, Carol Goff, Christine Halley, Pat Jennings, Carole Kamerlink, Ron Kamerlink, Susan King, Jane Lucas, Charlotte Mahood, Therese & Steve May, Judy Morgan, Ruth Morrow, Bambi Papais, Duane Papais, Marilyn Richards, Helen Scofield, Lori Sturdivant, Sarah Switek, Joani Taylor, Martha Wallace, Vienna Watkins, Sheila Wertman, and Larry D. White. ❖

ART ON MAIN

a community of artists

466-B Main Street • Murphys, CA • 209-728-1888
www.artonmainmurphys.com

The *Museletter* is produced by the following members of Art on Main gallery.
Copy Editor: **Marian Swanson** • Managing Editor/Writer: **Annie Fountain** • Graphics: **Karen O'Neill**

You are receiving this newsletter because you have requested to be part of our email newsletter list, made a purchase at our gallery, have purchased artwork from one of our artists, or entered one of our drawings. If you no longer wish to receive these mailings, just reply to this email and put your name and the word "unsubscribe" as the subject, and you will be removed from the list.